

**RESULTS OF A SURVEY ON INFESTATION ON  
*BURSAPHELENCHUS* SPP.  
IN PINE FORRESTS IN UKRAINE**

**Korma O.M., Chernigov State Institute for  
Economics and Management**

**Sigaryova D.D., Institute of Plants Protection of  
the Ukrainian Academy of Agrarian Sciences**

**PECULIARITY OF NEMATODES OF GENUS *BURSAPHELENCHUS* IS  
ADAPTATION TO THE WOOD-BEETLES OF GENUS *MONOCHAMUS***



**(foto Korma A. the Kyiv area, 2003)**

**THE LARVAE OF NEMATODES OF GENUS OF *BURSAPHELENCHUS*  
WERE FOUND OUT IN THE BOWELS OF BEETLES**



(foto Korma A., 2003)







## THE PINE-TREES ARE STAGGERED BY THE NEMATODES OF *BURSAPHELENCHUS MUCRONATUS*



- The dry (wilt) pine trees in state forest enterprise the "Kyivskoe" forest district is "Dachnoe" (foto Korma A. the Kyiv area, 2003)

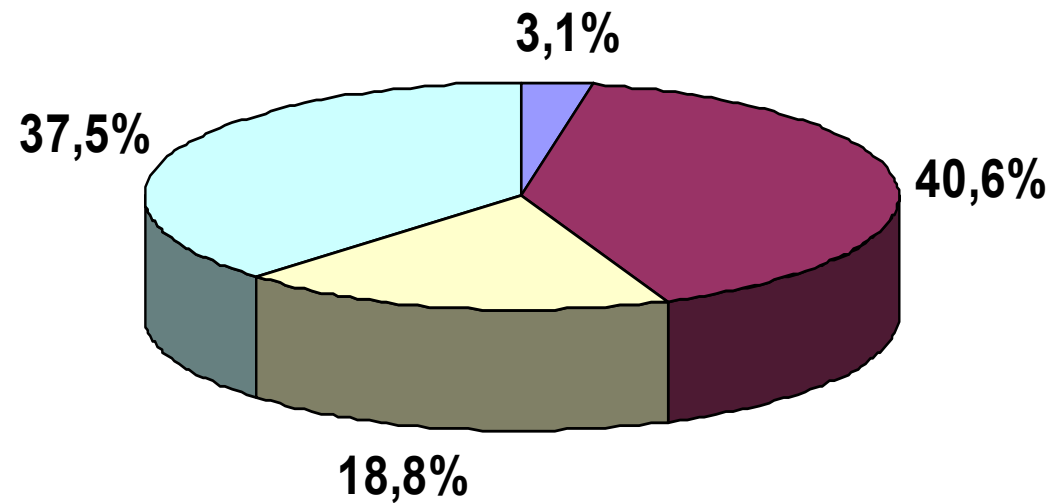


- The areas of the withering forest were exposed by means of aviation inspections (foto Korma A. the Kyiv area, 2003)

**MAXIMAL QUANTITY OF FOUND OUT NEMATODES OF  
*B. MUCRONATUS* IN WOOD OF THE LOST PINE-TREES AND  
BEETLES-VECTORS**

№	Investigational material	Amount of nematodes	
		in 1 beetle	in 100 g wood
1	wood of <i>Pinus sylvestris</i> (Ahmatovich, 2005)	-	1000
2	wood of <i>Pinus sylvestris</i> (Kruglik, 2003)	-	20000
3	<i>Monochamus urusovi</i> (Remezof, 2006)	110	-
4	wood of <i>Pinus sylvestris</i> (Korma, 2009)	-	2124
5	<i>Monochamus galloprovincialis</i> (Korma, 2009)	1230	-
6	<i>Ancylocheira octoguttata</i> (Korma, 2009)	691	-

## TAXONOMICAL STRUCTURE OF FOUND OUT NEMATODES



■ Araeolaimida ■ Rhabditida ■ Tylenchida ■ Aphelenchida

## A QUANTITY AND FREQUENCY OF EXPOSURE OF NEMATODES OF GENUS *BURSAPHELENCHUS* IS IN TESTS OF WOOD OF PINE-TREE

Species of nematodes	AV amount of individuals in in 100 g of wood	Frequency of discovery is in tests, %
<i>Bursaphelenchus mucronatus</i>	138,6	54,1
<i>Bursaphelenchus eggersi</i>	10,5	9,8
<i>Bursaphelenchus sexdentati</i>	0,5	4,9



**MORPHOLOGICAL FEATURES OF  
*BURSAPHELENCHUS MUCRONATUS*  
(MAMIYA ET ENDA)**



**Mucro on the tail of female**  
(foto Korma A.)



**Spikula of male**  
(foto Korma A.)

**MORPHOLOGICAL FEATURES OF  
*BURSAPHELENCHUS EGGERSI*  
(RUHM)**

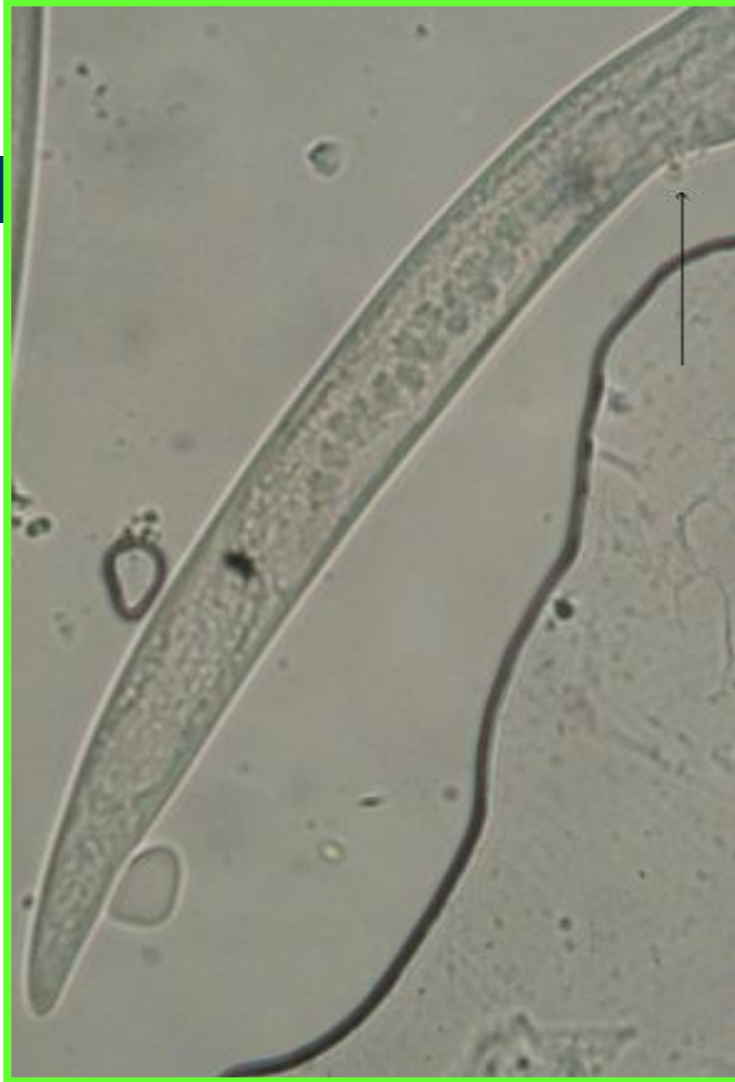


**Vulva and tails regions of female**  
*(foto Korma A.)*



**Spikula of male**  
*(foto Korma A.)*

**MORPHOLOGICAL FEATURES OF  
*BURSAPHELENCHUS SEXDENTATI*  
(RUHM)**



**Vulva and tails regions of female**  
*(foto Korma A.)*



**Spikula of male**  
*(foto Korma A.)*

**I thank you for attention**

